

# DIAMOND KOTE INSTALL INSTRUCTIONS

SPEC DRAWINGS ON PG 2.

## SPACER FLASHING INSTALLATION

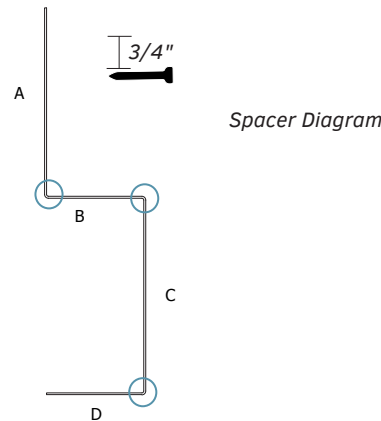
### GENERAL

- Spacer Flashing is designed to allow for the minimum clearance requirements for proper spacing between siding materials and roofing, decks, driveways, or sidewalks.

### INSTALL:

- Spacer Flashing can be installed with side "D" in moderate contact, or slightly gapped from the roofing, deck, driveway, or sidewalk.
- It is recommended to close the open end of the Spacer Flashing by making approximately 1" deep cuts on the bends (circled in Spacer Diagram) in from the end of the piece. Then bend the tabs created from those cuts inward in this order: B, D, then C.
- Fasten through side "A" to the wall every 12-16" on center. Place fastener  $\frac{3}{4}$ " down from the top of side "A".
- Properly integrate flashing with the secondary water-resistive barrier.
- Use house wrap, flashing tape, or other items as needed to maintain the counter flashing principle.

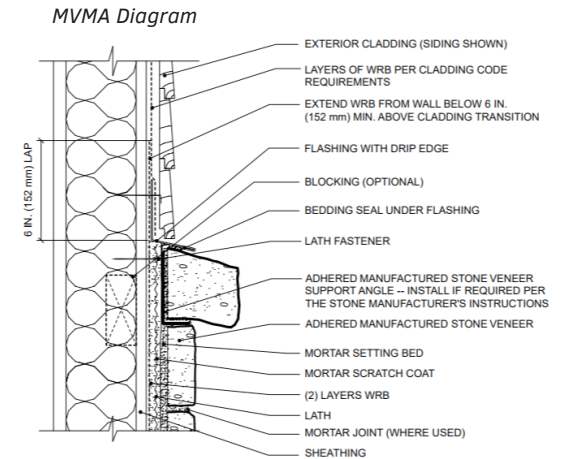
- **When installing siding, it's important to retain  $\frac{3}{8}$ " minimum clearance between the siding panels and side "B" of the Spacer Flashing and DO NOT Caulk.**



## BRICK LEDGE FLASHING INSTALLATION

### GENERAL

- Brick Flashing is designed to protect the structure from water penetration by flashing behind the siding and shed water away from the house at the transition where siding and stone or brick meet.
- Brick Ledge Flashing should be installed as shown in MVMA diagram.
- It is recommended to use bedding sealant under side "B" of the flashing. DAP Spec Line 920 Sealant is recommended.
- Verify installation requirements with brick or adhered concrete masonry veneer manufacturer.



- Fasten through side "A" to the wall every 12-16" on center. Place fastener  $\frac{3}{4}$ " down from the top of side "A".
- Properly integrate flashing with the secondary water-resistive barrier.
- Use house wrap, flashing tape, or other items as needed to maintain the counter flashing principle. See the MVMA diagram above.
- **When installing siding, it's important to retain  $\frac{3}{8}$ " minimum clearance between the siding panels and side "B" of the Brick Ledge Flashing and DO NOT caulk.**

